



GAT MONTHLY MEMBERSHIP PROGRESS REPORT

Results as of: 10/31/2021

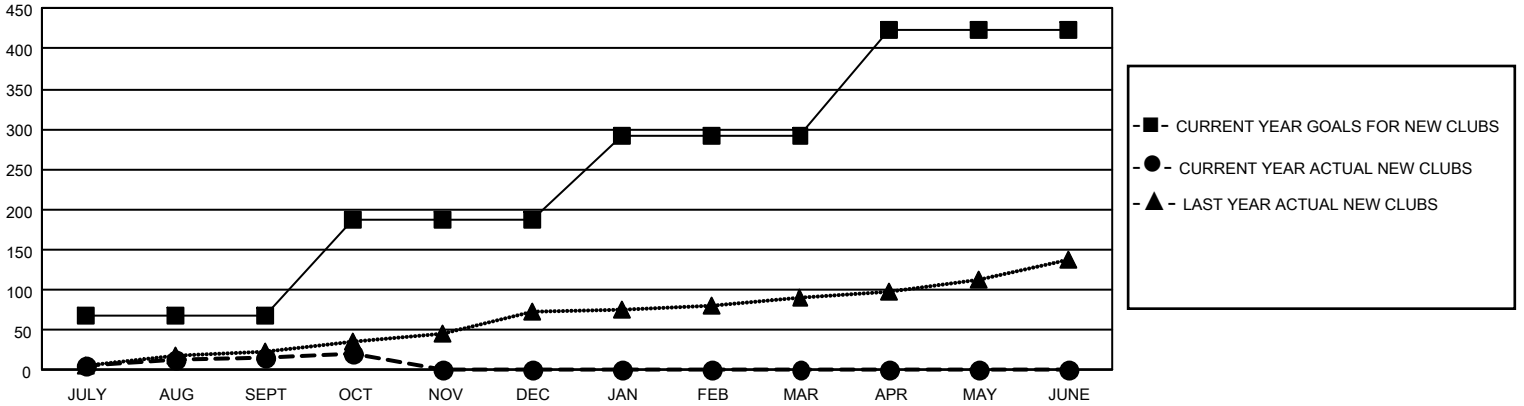
GAT Constitutional Area 1

REPORT DOES NOT INCLUDE CLUBS IN UNDISTRICTED AREAS.

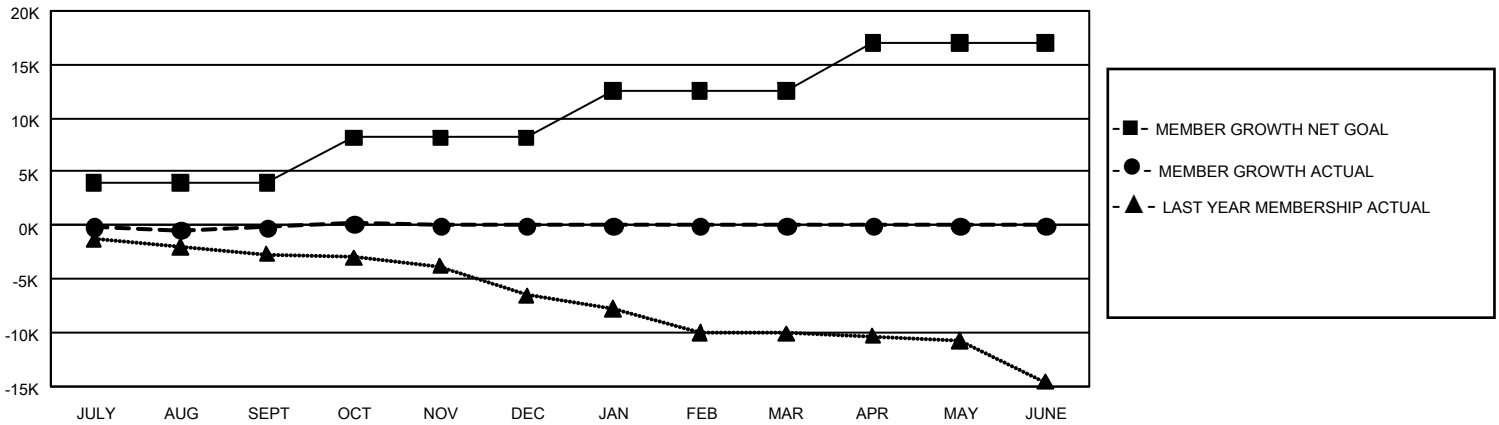
| Clubs | | | |
|-----------------------|---------------|-----------|---------------|
| RESULTS FOR 2021-2022 | | | |
| QUARTER | NEW CLUB GOAL | NEW CLUBS | DROPPED CLUBS |
| JULY/AUG/SEPT | 207 | 16 | 127 |
| OCT/NOV/DEC | 354 | 5 | 14 |
| JAN/FEB/MAR | 312 | 0 | 0 |
| APR/MAY/JUNE | 399 | 0 | 0 |

| Members | | | |
|-----------------------|------------------------|----------------------|--|
| RESULTS FOR 2021-2022 | | | |
| QUARTER | MEMBER GROWTH NET GOAL | MEMBER GROWTH ACTUAL | DROPPED MEMBERS ACTUAL (including transfers) |
| JULY/AUG/SEPT | 3936 | 8,772 | 7,719 |
| OCT/NOV/DEC | 4261 | 2,974 | 2,289 |
| JAN/FEB/MAR | 4320 | 0 | 0 |
| APR/MAY/JUNE | 4483 | 0 | 0 |

GOALS AND ACTUAL NEW CLUBS CUMULATIVE



GOALS AND ACTUAL MEMBERS CUMULATIVE



| | | | |
|---------------------------|---|---|------------------|
| DROPPED CLUBS: 141 | 3,571 CLUBS OF 10,639 ADDED 1 OR MORE NEW MEMBERS | <u>GENDER DISTRIBUTION</u> | |
| <u>DROPPED MEMBERS</u> | | MALE | 180,106 (65.42%) |
| DECEASED | 1,499 | FEMALE | 95,151 (34.56%) |
| CLUB CANCELLED | 915 | NON BINARY | 3 (0.00%) |
| OTHER | 7,590 | PREFER NOT TO ANSWER | 43 (0.02%) |
| TOTAL | 10,004 | TOTAL FAMILY UNIT MEMBERS 52,851 | |
| | CLICK HERE FOR CUMULATIVE MEMBERSHIP DATA | FAMILY MEMBERS PAYING HALF DUES 27,168 | |